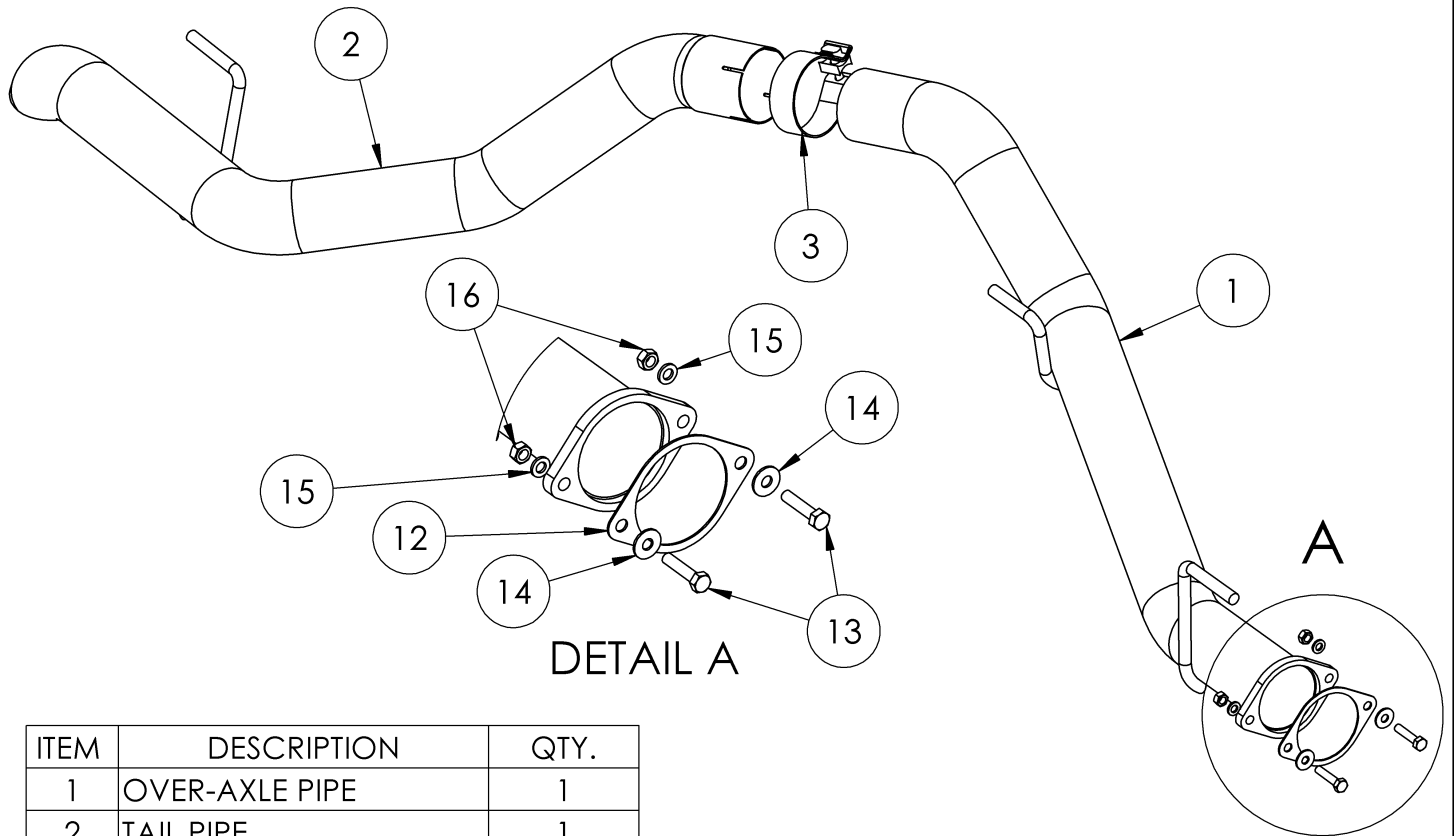


# S6502

2021-2023 JEEP GLADIATOR,  
3.0L ECODIESEL, FILTER BACK, 3.0"  
TURN DOWN REAR

# MBRP®



ITEM	DESCRIPTION	QTY.
1	OVER-AXLE PIPE	1
2	TAIL PIPE	1
3	3.0" CLAMP	1
4	GASKET	1
5	5/16" X 1.5" HEX BOLT	2
6	5/16" FLAT WASHER	2
7	5/16" LOCK WASHER	2
8	5/16" HEX NUT	2

Refer to this LOT NUMBER when contacting customer service: \_\_\_\_\_

## PLEASE READ BEFORE STARTING INSTALLATION

While MBRP has made every effort to ensure that all components of this system are of superior quality and properly packaged, it is the installer's responsibility to ensure the following before removal of the factory exhaust:

- that ALL components shown above are present.
- that ALL mating components fit together.
- that there are no damaged components.
- that the system you have purchased is appropriate for your vehicle year, model and configuration.
- that the system will not interfere with any modifications previously installed or planned.
- that you have read and understand these instructions.

If you have any questions or are uncertain about any aspect of the installation of this system to your vehicle please contact your dealer before commencing installation.

# MBRP

## Removal of Stock System



Figure 1



Figure 2



Figure 3



Figure 4

1. Apply penetrating lubricant liberally to all exhaust fasteners, hangers and rubber insulators.
2. Remove the spare tire and spare tire heat shield.
3. Unbolt the track bar on the exhaust side and rotate down out of the way. **Refer to Figure 1.**
4. Remove the nuts retaining the flange. **Refer to Figure 2.**
5. Remove the 3 hanger brackets, taking note which way they come off. Remove the exhaust towards the front of the vehicle. **Note:** If a Hoist is not available it may be required to cut the exhaust between the two mufflers over the axle.

## Installation of MBRP Performance Exhaust

1. Reinstall the track bar, heat shield and spare tire.
2. Slide the Rear hanger bracket and **3.0 Clamp** onto the **Tail Pipe**. **Refer to Figure 3.**
3. Place the **Tail Pipe** into position from the rear and loosely attach the hanger bracket. **Refer to Figure 4.**

# MBRP



Figure 5



Figure 6



Figure 7

4. Slide the **Over-Axle Pipe** into the **Tail Pipe** and slide the center and front hanger brackets onto the hangers.

**Refer to Figure 5.**

5. Loosely install the center hanger bracket.

**Refer to Figure 6.**

6. Using the hardware provided loosely attach the **Over-Axle Pipe** to the stock flange, ensuring to use the **Gasket**.

**Refer to Figure 7.**

8. Install the remaining hanger bracket and tighten all.

9. Carefully align the system and tip. Align the edge of each band clamp with the edge of the joint it is connecting. Tighten all hardware and clamps, starting at the front and working rearward to secure the system. Check along the full length of the exhaust system to ensure there is adequate clearance for fuel lines, vent lines, brake lines, frame, bodywork, suspension, and any wiring, etc. If there is any interference detected, relocate, or adjust to provide adequate clearance. Ensure all clamp connections are secure and components are unable to rotate or slide. Band clamps require approximately 45 lb-ft (60 N-m) of torque. Verify clearances, system security and band clamp torque after 30-60 miles (50-100 km) of driving.



**Congratulations!** You are ready to begin experiencing the improved power, sound and driving experience of your **MBRP** Performance Exhaust. We know you will enjoy your purchase!